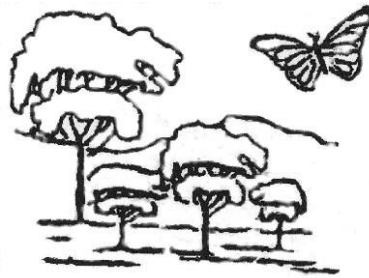


Yare Valley Society

Enhancing the Valley
for wildlife and Informal recreation



Newsletter 119 June 2023

Annual General Meeting and Talk

Wednesday 21st June 2023 at 7.30 pm

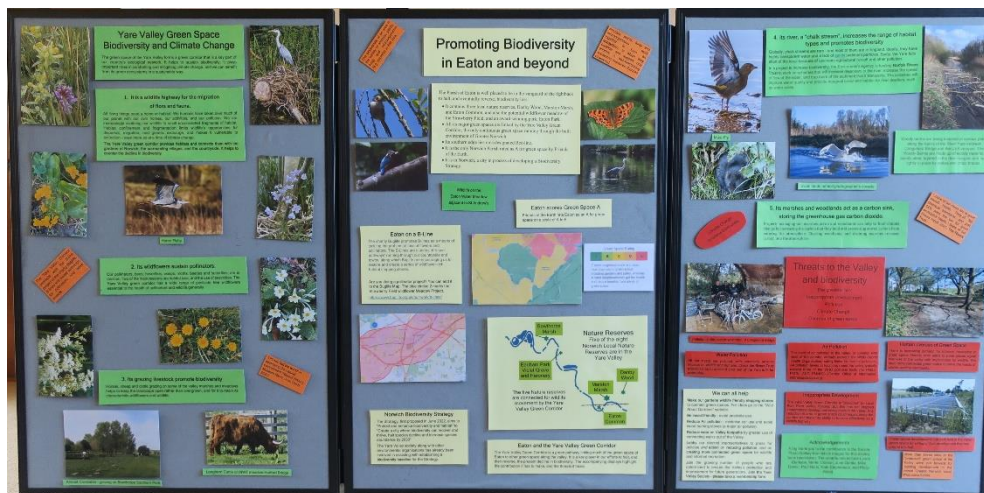
Cringleford Sports Pavilion

(Entrance via Recreation Ground at end of Oakfields Road Cringleford)

The formal part of the AGM is normally concluded in the first half hour. We will then be able to enjoy ***“Restoring the River Yare,”*** a talk by Sarah Gelpke of the Norfolk Rivers Trust, who is overseeing the current work on the river to modify the water flow and create new habitat. The papers for the AGM are at the end of this Newsletter.

Please come along and support the Society. Please give thought to joining the committee. At present the committee is down to four members, and until its numbers are increased, the future of the Society is at risk.

Eaton Eco Fair



Yare Valley Society Display for the Eaton Eco-Fair

The focus of the Fair this year was on the biodiversity of the Eaton neighbourhood. The Parish of Eaton is well placed to be on the frontline of the fightback to halt and eventually reverse biodiversity loss. It has the Yare Valley green corridor along its southwestern boundary, and contains three nature reserves, and a potential wildflower meadow.

Included in the presentations at the Fair was one by Matt Tomlinson on the progress being made by the *Friends of Strawberry Field and UEA meadows*, on promoting the growth of wildflowers on the Field and on UEA Campus.

We again had a display at the Fair, and the YVS display highlighted of the green assets of Eaton.

Deal Ground Consultation

The Deal ground development is of concern to the Society because of its potential impact on the Yare Valley Green Corridor. Any built development intrusion into one part of the corridor can reduce the effectiveness of the whole corridor in promoting biodiversity and combatting the effects of climate change.

The Society has responded to the consultation to express its concerns and to promote the features that it sees as desirable, and so to maximise the chance of them appearing in the final application. The features include:

The County Wildlife Site (CWS)

Provision of fencing or ditching to reduce the likelihood of human intrusion into the CWS. The drainage swales from the development should be designed to ensure that there is no pollution of the CWS, and should ensure the water levels are managed on the CWS to maximise biodiversity. A management scheme should be put in place to ensure the CWS is managed in the future to maximise biodiversity.

Biodiversity on Site

Any vegetation removed from the site (including that removed recently by the development company from the banks of the Yare and the associated drainage ditch – being investigated by South Norfolk District Council) should be more than compensated for by an extensive planting programme for the development.

Flooding

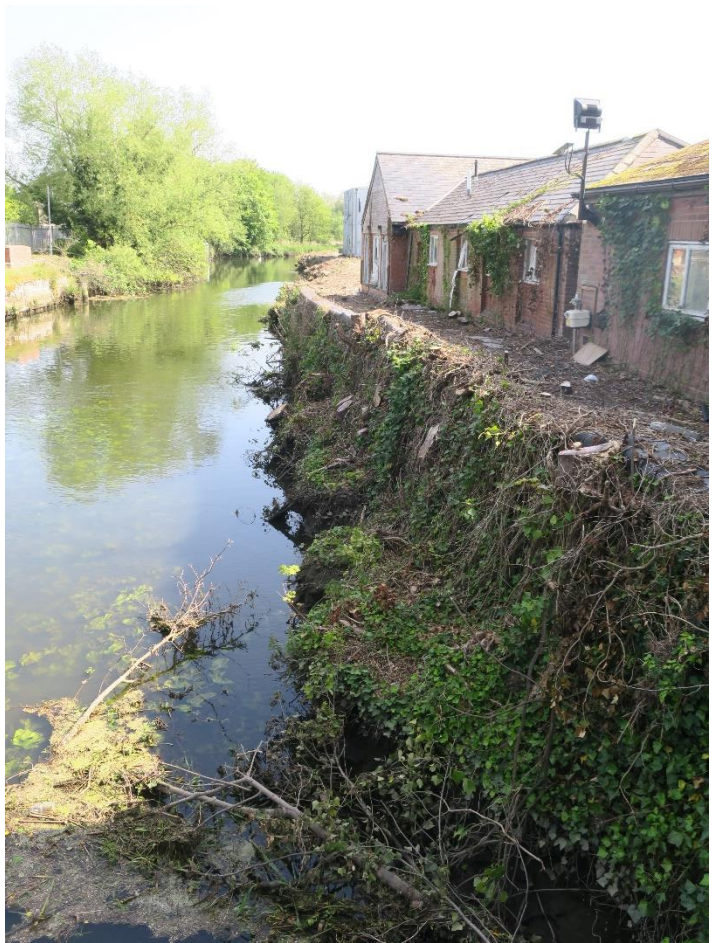
The Development should be designed so that it will in no way increase the likelihood of flooding of the Wensum or Yare either upstream or downstream of the development, and where possible should lead to a reduction in the probability of flooding.

Pedestrian and cyclist routes through the site

The development should incorporate off-road walking and cycling routes north south, with a crossing of the Wensum, and east west, linking the proposed future Colman development with the proposed over the Yare to the Whitlingham Country Park.

Yare Valley Green Infrastructure Corridor and Parkway.

The development is at a pinch point on the valley green corridor at Lord Boswell's Green/Bracondale. The pinch point has recently been made worse by the removal of mature trees along the Yare and from the drainage channel adjacent to the development site. The development should be set back from the channel and from the river where possible, and the recent damage made good as far as can be by replanting with semi-mature trees alongside the river and the channel.



Habitat destruction on the Yare at Deal Ground – felled trees and cleared vegetation.

The proposals and a means of making your views known are at <https://www.dealgroundconsultation.co.uk/>, click first on *Downloads* to look at the proposals, and then on *Feedback* to make your views known.

Please show the Valley is important to you!

Have your say on green spaces in Greater Norwich

Greater Norwich Growth Board are consulting on green spaces in and around Norwich. **The deadline to respond is 21st June.** The Board explains:

“The consultation ... gives those taking part a chance to tell us how and why they use existing green spaces, plus their thoughts on how these spaces could be improved.

Your views are essential to informing the Greater Norwich Growth Board's new Green Infrastructure Strategy which will cover the areas of Norwich, Broadland and South Norfolk. ... the new Green Infrastructure Strategy aims to deliver:

- A fresh approach to managing and improving existing green spaces to make sure they benefit as many people as possible, with a focus on inclusive access.
- A strategy for creating new green spaces in the area that will benefit people and nature.

Green Infrastructure refers to a wide range of features that can be natural, like woodland and rivers, or man-made like parks, allotments, hedgerows, playing fields, cycleways, footpaths and even road-side verges.”



A visitor to an ox-eyed daisy in the Strawberry Field

More details are at <https://www.greaternorwichgrowth.org.uk/projects/giconsultation/>.

Please respond to say how important green space, and in particular, the Yare Valley Green Corridor, is to you, and the importance of improving green space in the future.

Creating a baseline for biodiversity in the Strawberry Field



Plant surveyors surrounded by swathes of ox-eyed daisies.

Photo: Matt Tomlinson

A big thanks to all who turned out for the Plant Survey on Saturday the 3rd June. The organiser, Matt Tomlinson writes:

"12 volunteers turned out for the first plant survey on Strawberry field, we spent 2 hours in the sunshine and threw 80 quadrants to sample 120 square metre. Thanks to two botanists in the group, we also added to the list of plants recorded on site - which now stands at 83. This includes one red listed threatened species. The survey gives us a great idea of the baseline biodiversity and we can now see how changes, such as cut and collect mowing, will improve the plant diversity."

More photos and information on [Friends of Strawberry Field and UEA meadows | Norwich | Facebook](#)

The Conservation Volunteers (TCV)

If you would like to get involved in active conservation work in Norwich and beyond, go to the TCV website at:

<https://www.tcv.org.uk/eastern/tcv-norfolk/>

Papers for the AGM

AGM AGENDA

1. Welcome
2. Apologies for absence
3. Minutes of the AGM held on Wednesday 29th June 2022 (see below)
4. Matters arising
5. Chair's Report (See below)
6. Treasurer's report (See below)
7. Election of Officers for 2023/2024:
 - Chair
 - Vice Chair
 - Honorary Secretary
 - Honorary Treasurer
 - Committee members (maximum of five)
8. Any other business

Followed by a talk by a talk by Sarah Gelpke of the Norfolk Rivers Trust: **"Restoring the River Yare"**.

Agenda Item 3: MINUTES OF 2022 AGM

The 2022 AGM held at 7.30 pm on Wednesday 29th June 2022 at Cringleford Playing Fields Pavilion

The Chair welcomed members and non-members to the first face to face meeting since the beginning of the Covid pandemic.

Apologies for absence were received from June Gentle, Jackie Marquart, Robert Buckley and David Taylor.

[All the Papers for the meeting had been circulated in the most recent YVS Newsletter, copies were also available at the meeting]

Minutes of the AGM held on Wednesday 8th May 2019 were accepted as accurate: Proposed by P Hann and seconded by G Martin.

There were no matters arising.

Chairs Report. The Chair spoke briefly to his previously circulated report. He spoke of the sad passing of the recent Vice-chair, John Ayton who had been on the committee for many years and a member for over 30 years. He thanked the committee for their support - all of whom had served for at least four years. He appealed for members to come forward to serve on the committee. There were no questions.

Treasurer's report. The Honorary Treasurer spoke briefly to the report. There were no questions. She drew attention to the form at the end of the AGM papers for anyone wishing to volunteer their services in support of the committee.

Election of Officers for 2022/2023:

June Gentle and Graham Fletcher were not standing for re-election to the committee. The Chair thanked them for their service to the Society. He thanked those on the committee who were seeking re-election. There were no other nominations.

The following stood for election:

Chair: John Elbro. Proposed Paul Hann, seconded Hazel Martin

Vice Chair: Rachel Taylor, Proposed John Elbro, seconded Graham Martin

Honorary Secretary. Position vacant

Honorary Treasurer. Proposed John Thurman, seconded John Elbro

Committee Member. Graham Martin.

All were elected unanimously.

There was no AOB.

Agenda Item 5: CHAIR'S REPORT 2022/2023

It was with great sadness the committee learned of the passing of Andrew Salisbury in August aged 91. Andy was a stalwart of the Society for many years and a founder member of the Society in the late 1960s. He was a robust defender of the Valley, and was involved in the successful opposition to a cinema and then a Tesco's on Bluebell Road. He was ably supported by his wife Val, who pre-deceased him.

.....

A recent YouGov Poll found that 81% of adults believe that nature is under threat and that more needs to be done to protect and restore it. The Valley green corridor has a vital role to play in protecting and restoring nature, but the pressure to build on the Valley green corridor and the pressures of human overuse as a result of the growing residential development continue. It also remains to be seen how damaging the Retained EU Law (Revocation and Reform) Bill will be for the environment. The role the Society and the actions of its members are more important than ever.

All is not doom and gloom, and a number of positive initiatives give cause for hope.

First from individuals:

Matt Tomlinson has initiated changes to the management regime of the Strawberry Field and the UEA meadows which should see a blossoming of wildflowers in these areas. A Friends group has been formed to carry the changes forward.

Another person, who wishes to remain anonymous, has actively pursued several courses of action in an attempt to stop what is likely to be criminal damage by a known person to the trees and vegetation on the green riverside area adjacent to the Waitrose car park. The situation is under review.

More generally:

Norwich City Council have launched a Biodiversity Strategy. In support of this a YVS representative attended a workshop on establishing a biodiversity baseline for Norwich, and it was pleasing to see three points made by Society made it to the "Main Findings".

Norfolk Rivers Trust has undertaken restoration work on the river and Sarah Gelpke will be telling us about this at the AGM.



Norfolk River Trust Work on restoring the Yare

The year has also seen the completion of the Cringleford Meadow Path and Car park Improvements, and the opening of the Kett's Country Long Distance Trail marked by a sculpture where it joins the Yare Valley Walk. The trail, together with the the associated Cringleford circular walks should help to take some of the pressure off the valley's overworn paths.

We are thankful to the Norwich Fringe Project, the Norfolk Wildlife Trust, and now also the Norfolk Rivers Trust, for their work on maintaining and improving the Valley. The NWT has appointed a Manager for its Urban Nature Reserves and his brief includes Harford Bridge Meadows.

Public Consultations and Planning Applications on matters affecting the Valley continue to figure largely in the committee's considerations.

A very big thank you to members who have responded to one or more of the public consultations on the Norwich City Council Biodiversity Strategy, on the Deal ground and the Colney Hall pre-application planning, and to the various full planning applications.

The Greater Norwich Local Plan for 2026 to 2038 is continuing to be examined by the Planning Inspectors, and so we do not yet know the outcome of the Society's objections to parts of the plan. It looks as though the plan is unlikely to be adopted before 2024.

There have been two consecutive planning applications for phase 3 of the McCarthy Stone development to consider. The second application saw some improvement on the first, but both have now been withdrawn. An application for an attenuation pond for this development, which the YVS committee considered fell far short of best practice in an environmentally sensitive area, has also been withdrawn. A planning application, satisfying a condition laid upon Phase 2 of the McCarthy Stone development, for improving the part of the Yare Valley Walk from the present improved path near the Strawberry Field to the Cringleford Meadow has been approved.

The committee had a pre-application consultation with the developers of the Colney Hall Estate. The developers are seeking outline planning permission for a retirement living community including up to 210 extra care units with associated communal and research facilities. The estate is a key contributor to the landscape character and biodiversity of the Valley, and the committee expressed their concerns.

I hope members feel the Society gave helpful support on its website, Facebook and in Newsletters on responding to these consultations.

Publicity for the work of the Society continues on its Website, Facebook and Newsletters, and in its flyer distribution. Further publicity has come with the Society's stand at the recent Eaton Eco Fair and its display can be seen at the AGM.

I give grateful thanks to our committee members Graham Martin, Rachel Taylor, and Treasurer Hilary Hann, for their unstinting support in the past year. All of us have served on the committee for at least five years. My thanks too to Tim Edwards for his support over many years in distributing the digital Newsletter. B and W version.

Recruitment and renewals to the Society have been slow and appeals to members to fill vacancies on the committee have, so far, failed. The Society, like much of the wildlife it seeks to protect, is threatened with extinction.

Please seriously consider ensuring the future of our Society either by joining the committee or by giving ancillary help such as organising walks, managing website pages, arranging talks, writing articles or other projects.

John Elbro, Chair.

Stories, pictures and news of activities in the Valley for possible publication in the Newsletter and/or on the YVS website and Facebook are always welcome at yarevalleysociety@gmail.com.

AGENDA ITEM 7: TREASURER'S REPORT 2022

Treasurer's Report

Accounts for period 1 January 2022 to 31 December 2022

Current Account

Income		Expenditure	
	2022		2022
	£		£
Subscriptions	165.00	Hire of Cringleford Pavilion for AGM	41.25
Donations	100.00	Public Liability Insurance	157.00
YVS Guides	2.00	Printing: Posters for AGM	17.00
		Printing: newsletters	39.60
		Website maintenance	79.08.
		Plant Life donation for AGM speaker	30.00
	Total 267.00	Total	363.93
Deficit	96.93		
	<hr/>		<hr/>
Total	363.93	Total	363.93

Bank Reconciliation:	Balance at 1 January 2022	£ 890.16
	Less	<u>£ 96.93</u>
	Balance at 31 December 2022	£ 793.23

Deposit Account

Balance at 1 January 2022	£ 3100.57
Add Interest	<u>£ 16.49</u>
Balance at 31 December 2022	£ 3117.06

Hilary Hann, Treasurer. 06/23

Please use the form below to join or renew your subscription (if outstanding).

Yare Valley Society

Membership Form

Name (Please Print)	Mr/Mrs/Miss/ ...
Address	Post Code:
Telephone No.	
Email Address	
Other Family Members	
Are you interested in giving active support to the Society e.g. with administration, IT, Planning, Ecology, or other? If yes, please indicate your area of interest:	
Membership Subscriptions (Please delete as appropriate) Individual: £5 per year or £20 for 5 years Family: £7.50 per year or £30 for 5 years Payment may be made by: Cheque payable to "Yare Valley Society" Bank transfer or Direct Debit to Yare Valley Society, Sort Code: 20-62-53, Account Number: 30994286	
Permission to store and process your personal data To enrol you as a member of the Yare Valley Society, keep you informed of the activities of the Yare Valley Society and enable you to actively participate in supporting the Society, we need to record some of your personal details. To comply with the GDPR we must ask for your permission to store and process your personal data for this purpose. Please see our privacy policy " Looking after your personal data " on the "join us" page of the Society Website. I give my consent to the Yare Valley Society recording personal information about me Signature: Date:	
Please forward your completed form to: Hilary Hann, Treasurer, 18 Bluebell Road, Norwich, NR4 7LF	
Office Use: Date returned: Subscription renewal date:	